

### NUMBER OF CONFLICT-RELATED DEATHS AND CAUSES



### MOST AFFECTED LGAS

Aba North



Ukwa West



Arochukwu

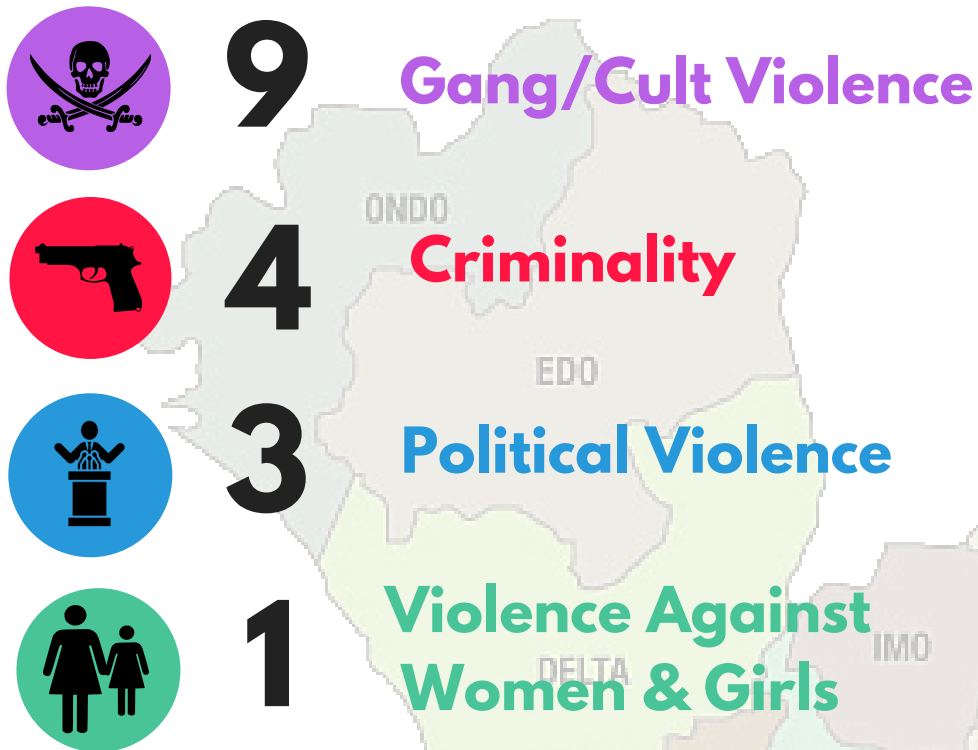


Inquiries: Afeno Super Odomovo  
Telephone: 08172401595  
Email: [afeno@pindfoundation.org](mailto:afeno@pindfoundation.org)

# AKWA IBOM

Apr-May 2019

## NUMBER OF CONFLICT-RELATED DEATHS AND CAUSES



## MOST AFFECTED LGAS

Uyo



Obot-Akara



Ikot Abasi

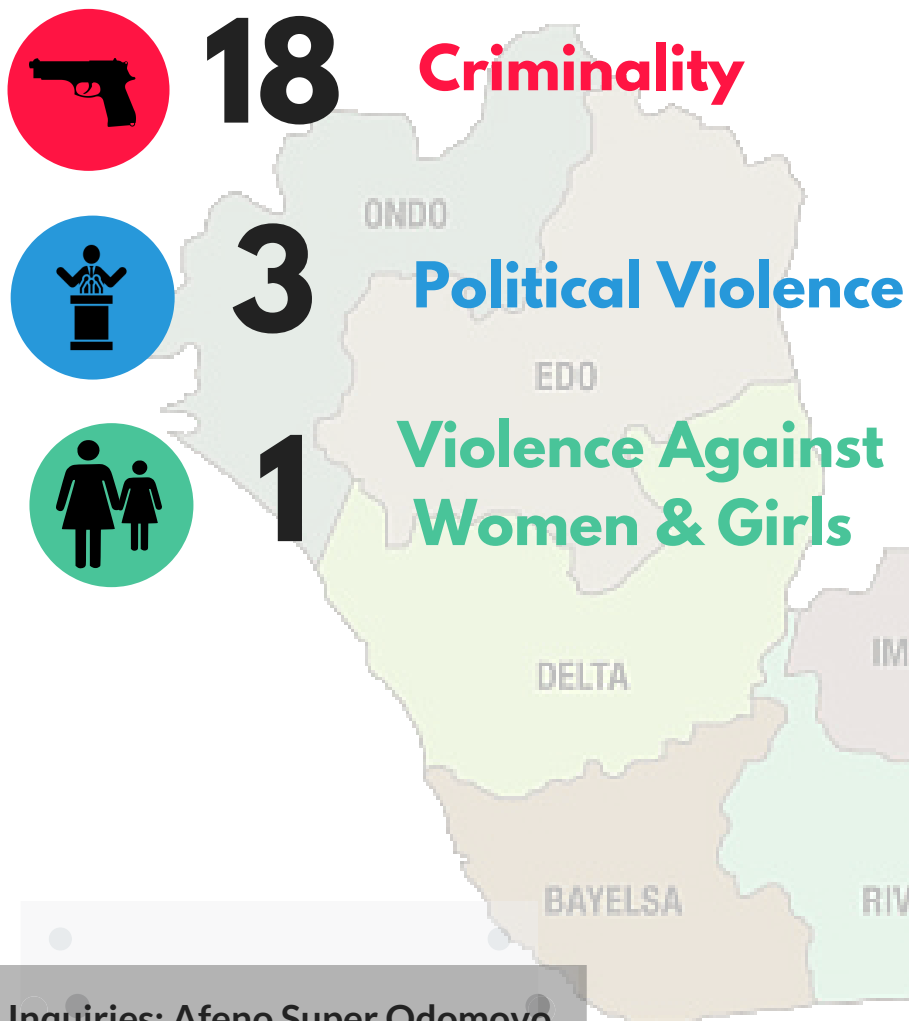


Inquiries: Afeno Super Odomovo  
Telephone: 08172401595  
Email: [afeno@pindfoundation.org](mailto:afeno@pindfoundation.org)

# BAYELSA

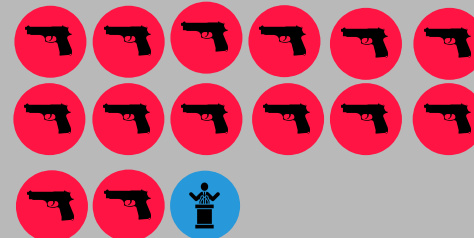
Apr-May 2019

## NUMBER OF CONFLICT-RELATED DEATHS AND CAUSES



## MOST AFFECTED LGAS

Yenagoa



Kolokuma-Opokuma



Southern Ijaw



Nembe

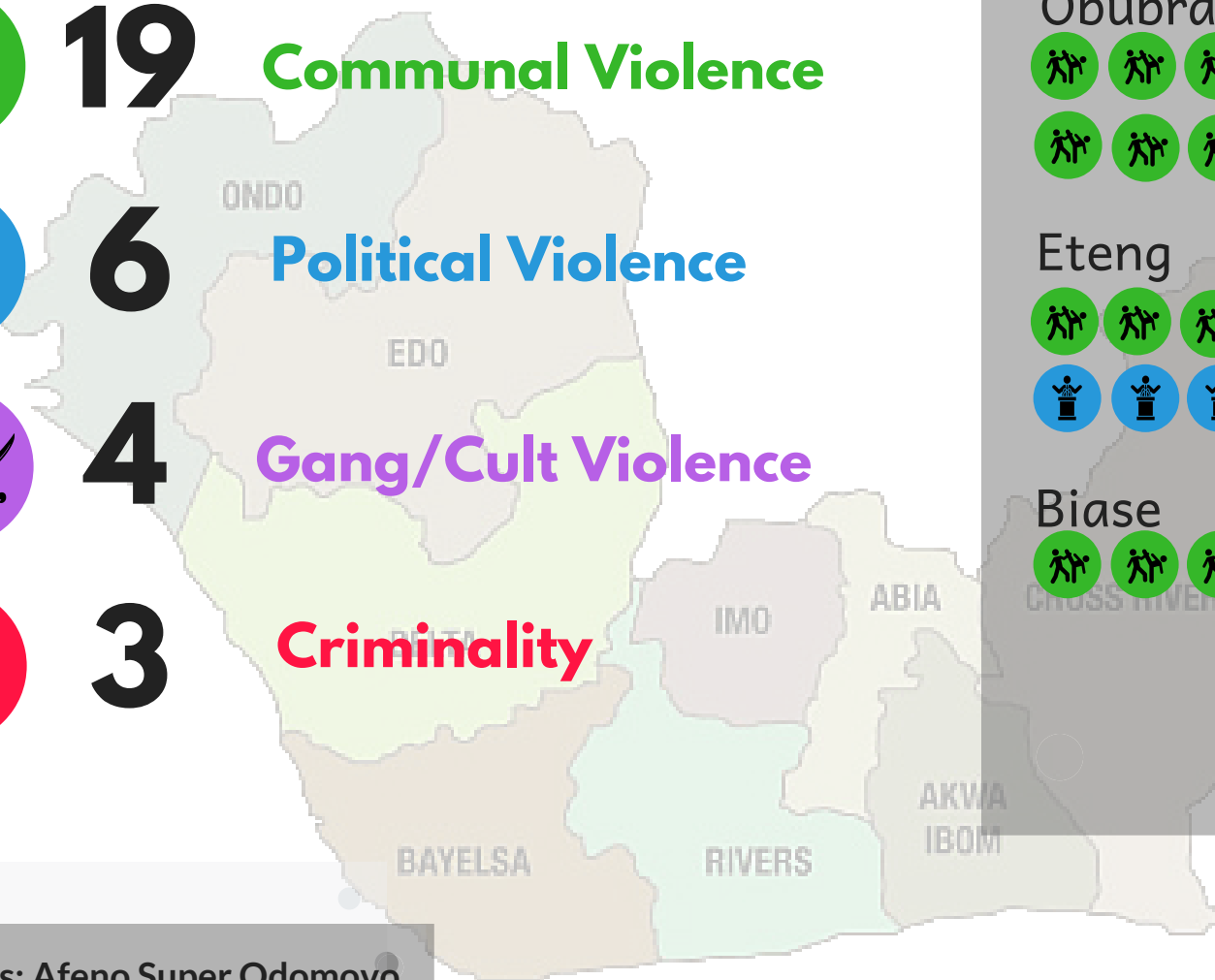


Inquiries: Afeno Super Odomovo  
Telephone: 08172401595  
Email: [afeno@pindfoundation.org](mailto:afeno@pindfoundation.org)

# CROSS RIVER

Apr-May 2019

## NUMBER OF CONFLICT-RELATED DEATHS AND CAUSES



## MOST AFFECTED LGAS



Inquiries: Afeno Super Odomovo  
Telephone: 08172401595  
Email: [afeno@pindfoundation.org](mailto:afeno@pindfoundation.org)

# DELTA

Apr-May 2019

## NUMBER OF CONFLICT-RELATED DEATHS AND CAUSES



16

**Criminality**



16

**Communal Violence**



12

**Political Violence**



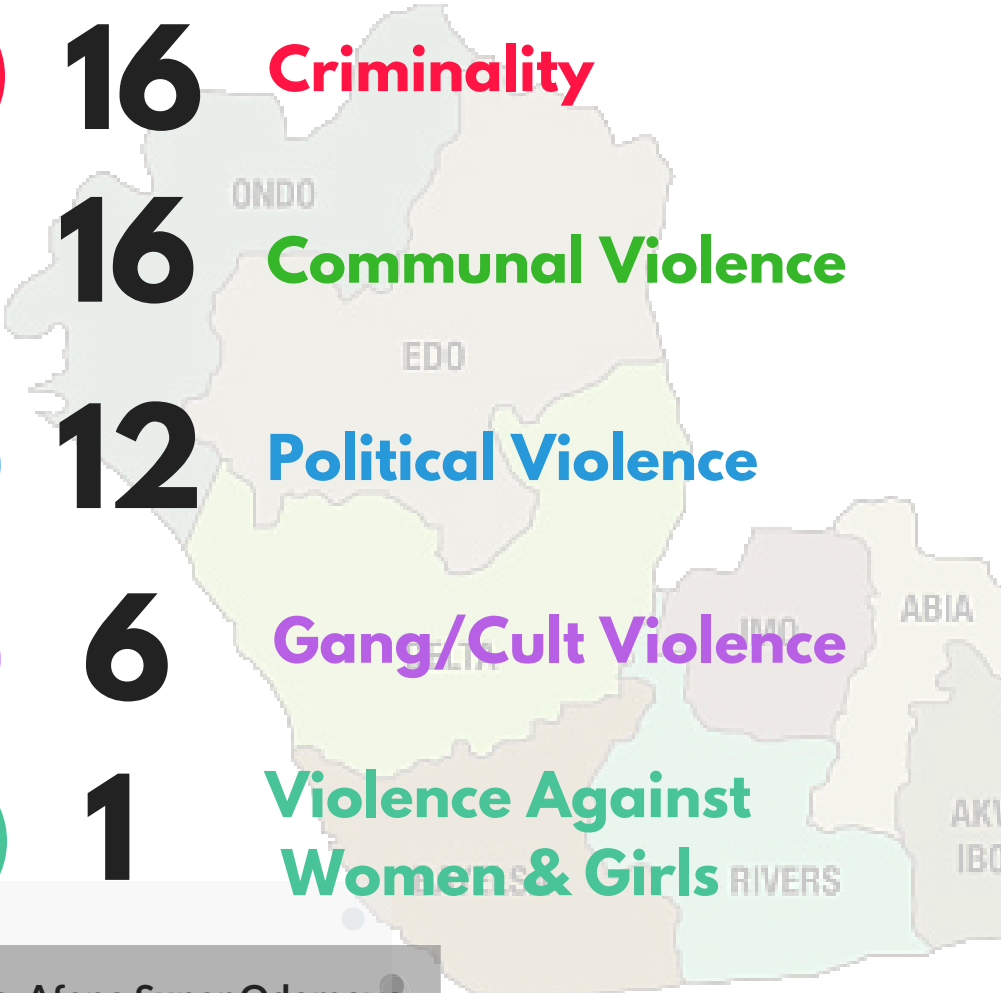
6

**Gang/Cult Violence**



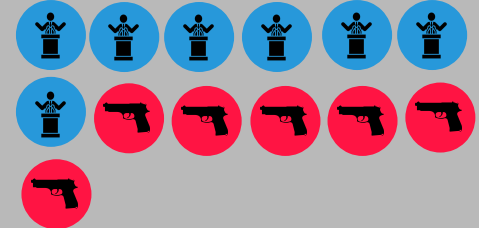
1

**Violence Against Women & Girls**



## MOST AFFECTED LGAS

Uwvie



Ethiope East



Oshimili North



Inquiries: Afeno Super Odomovo  
Telephone: 08172401595  
Email: [afeno@pindfoundation.org](mailto:afeno@pindfoundation.org)

# EDO

Apr-May 2019

## NUMBER OF CONFLICT-RELATED DEATHS AND CAUSES



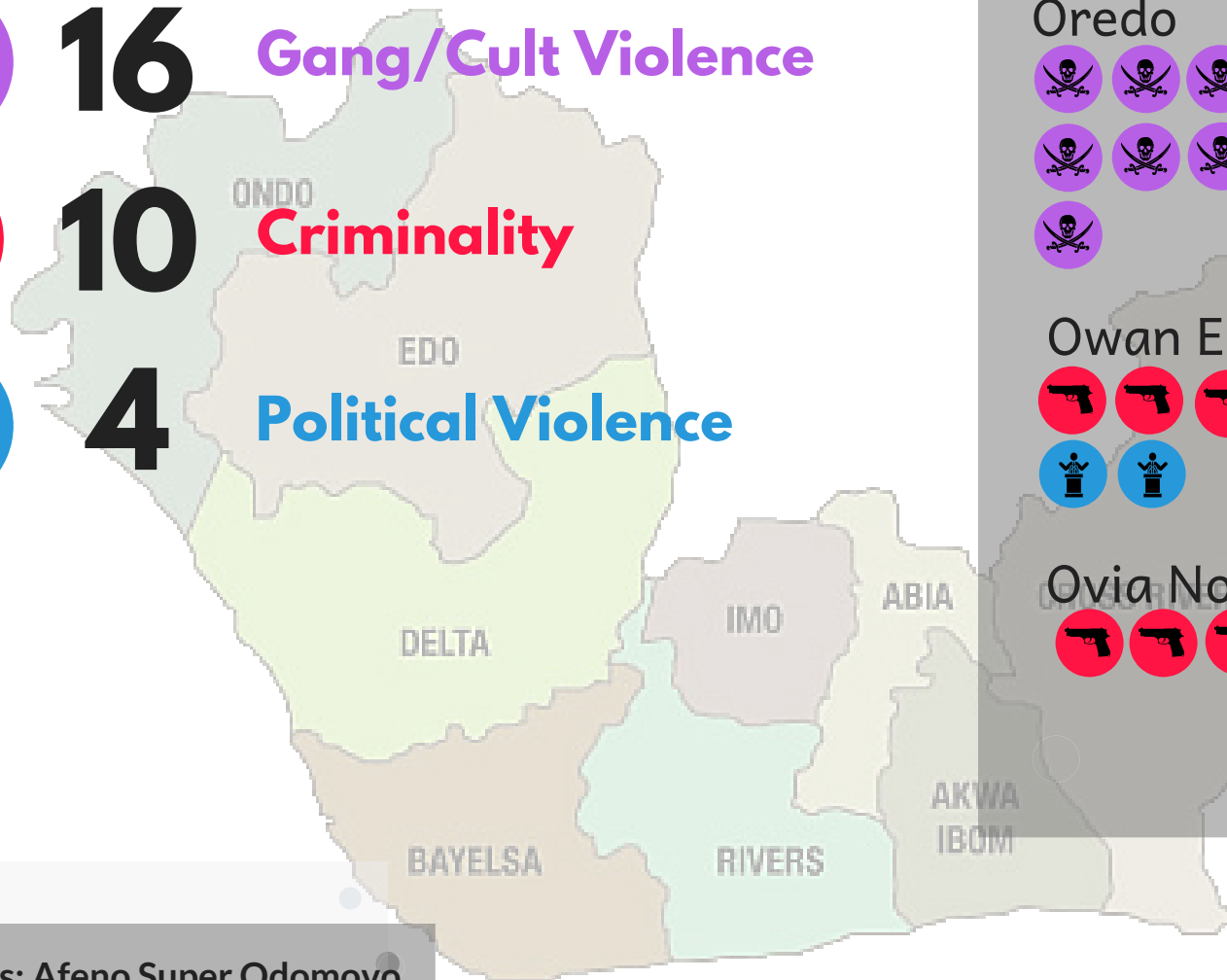
**16** Gang/Cult Violence



**10** Criminality



**4** Political Violence



## MOST AFFECTED LGAS

Oredo



Owan East

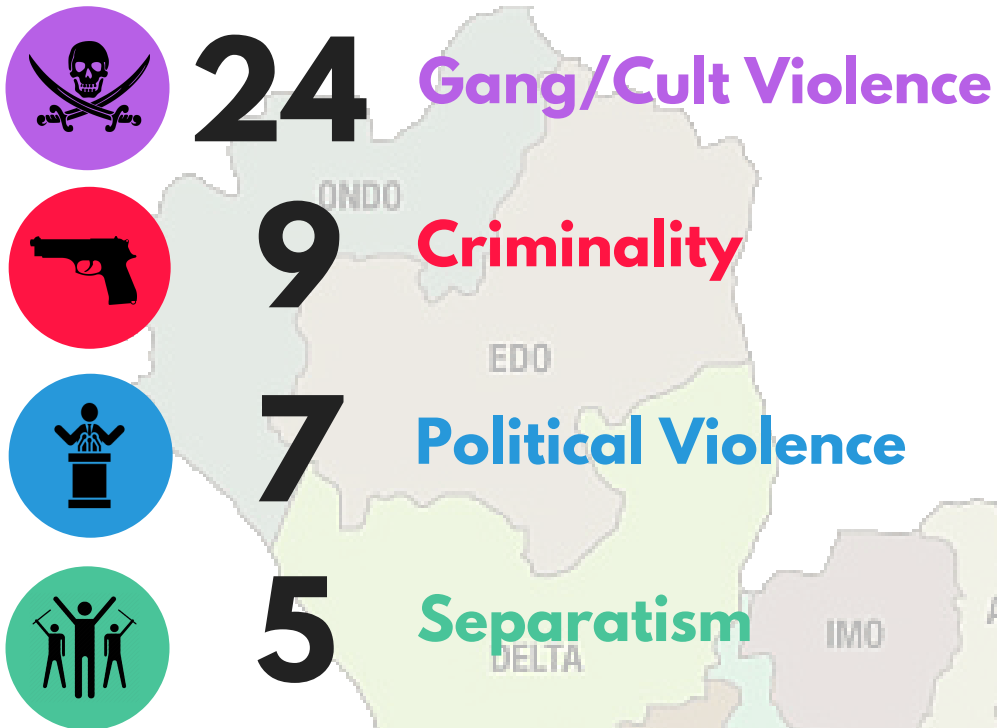


Ovia North-East



Inquiries: Afeno Super Odomovo  
Telephone: 08172401595  
Email: [afeno@pindfoundation.org](mailto:afeno@pindfoundation.org)

### NUMBER OF CONFLICT-RELATED DEATHS AND CAUSES



### MOST AFFECTED LGAS

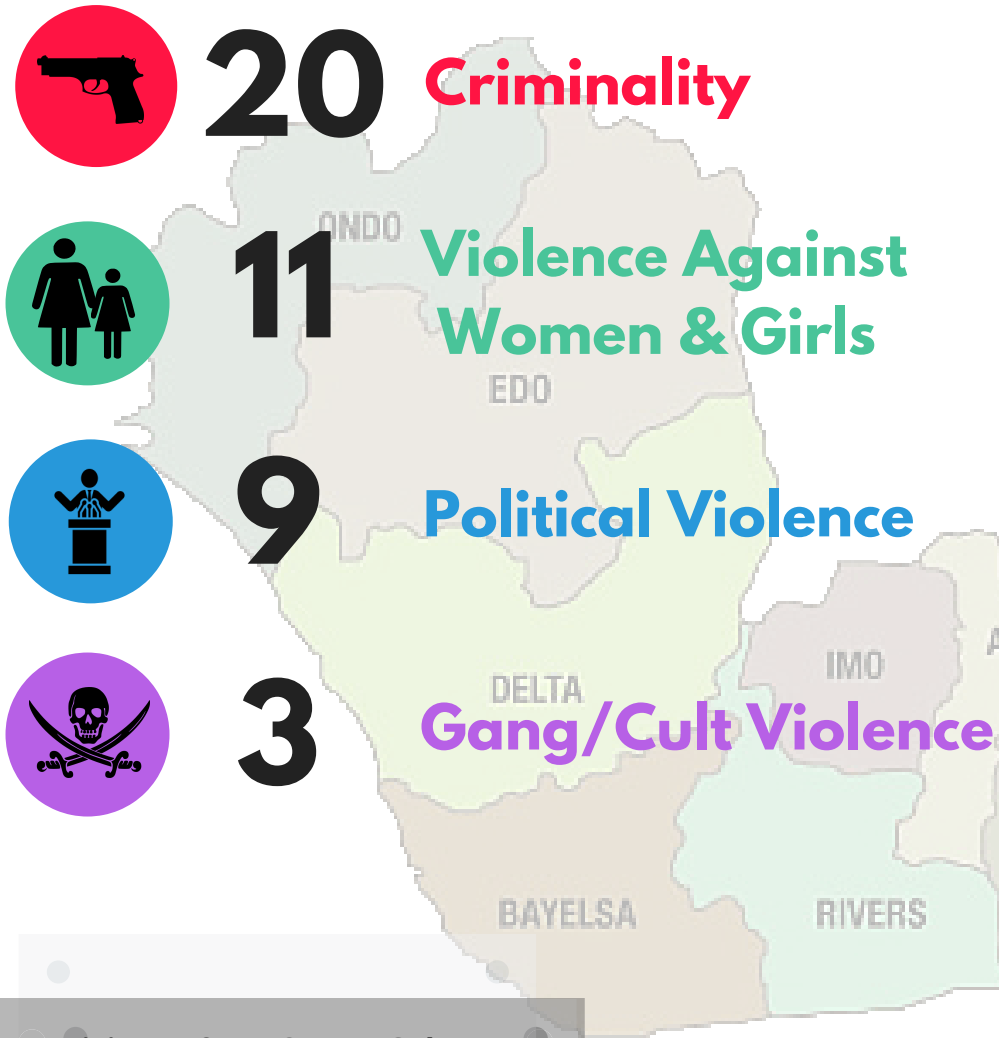


Inquiries: Afeno Super Odomovo  
Telephone: 08172401595  
Email: [afeno@pindfoundation.org](mailto:afeno@pindfoundation.org)

# ONDO

Apr-May 2019

## NUMBER OF CONFLICT-RELATED DEATHS AND CAUSES



## MOST AFFECTED LGAS

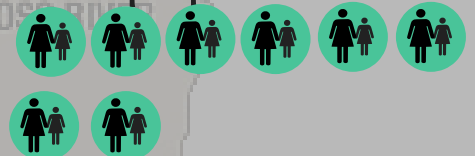
Ose



Akure South



Okitipupa



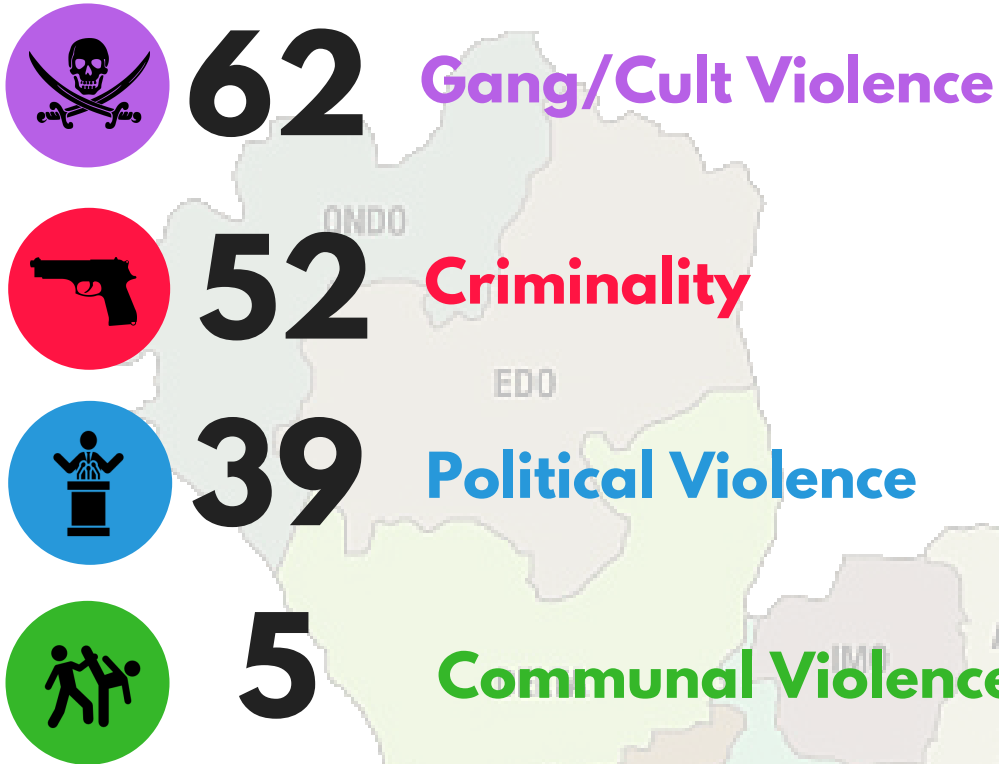
Inquiries: Afeno Super Odomovo  
Telephone: 08172401595  
Email: [afeno@pindfoundation.org](mailto:afeno@pindfoundation.org)



# RIVERS

Apr-May 2019

## NUMBER OF CONFLICT-RELATED DEATHS AND CAUSES



## MOST AFFECTED LGAS

Khana



Oyigbo



Inquiries: Afeno Super Odomovo  
Telephone: 08172401595  
Email: [afeno@pindfoundation.org](mailto:afeno@pindfoundation.org)